

## Prescription/Universal Form – ICD Codes

The Diagnoses that will accompany a prescription, via the Universal Form, are visible from the Insurance button within a specific Prescription. The ICD codes entered here will print out on the Universal Form. The ICD codes in the prescription's Insurance window can be manually entered, but will default to the primary and secondary cycle diagnoses if they have been mapped to billable ICD codes.

Comment: \_\_\_\_\_

Id	Rx Type
2	Apparatus
9	Medication
5	Medication
11	Medication
8	Medication
7	Medication
6	Medication
10	Medication
4	Medication
3	Medication
1	Medication

Prov:  NRS:

Message: \_\_\_\_\_ Partner: \_\_\_\_\_

Insurance Company	Policy #	Insured	Prim	Pmt Type	Amt	Exp Date	Use
Gallagher Benefit	12345	Self	<input checked="" type="checkbox"/>	Self Pay		[NULL]	<input type="checkbox"/>
~BC/BS of NJ		Self	<input type="checkbox"/>	Self Pay		[NULL]	<input type="checkbox"/>
Devon		Self	<input type="checkbox"/>	Self Pay		[NULL]	<input type="checkbox"/>
Oxford Referral		Self	<input type="checkbox"/>	Self Pay		[NULL]	<input type="checkbox"/>

Medical Necessity:

Primary Diagnosis:

Secondary Diagnosis:

Current Treatment:

IUI  IVF  Other

Refills:

Buttons: OK, Cancel, Add, Edit, Delete, Insurance, Ship To, Apply

For detailed instructions on creating prescriptions and for more information on the Insurance button in a prescription please refer to the Knowledge Base article Prescription User. Instructions for mapping cycle diagnoses to ICD codes are as follows:

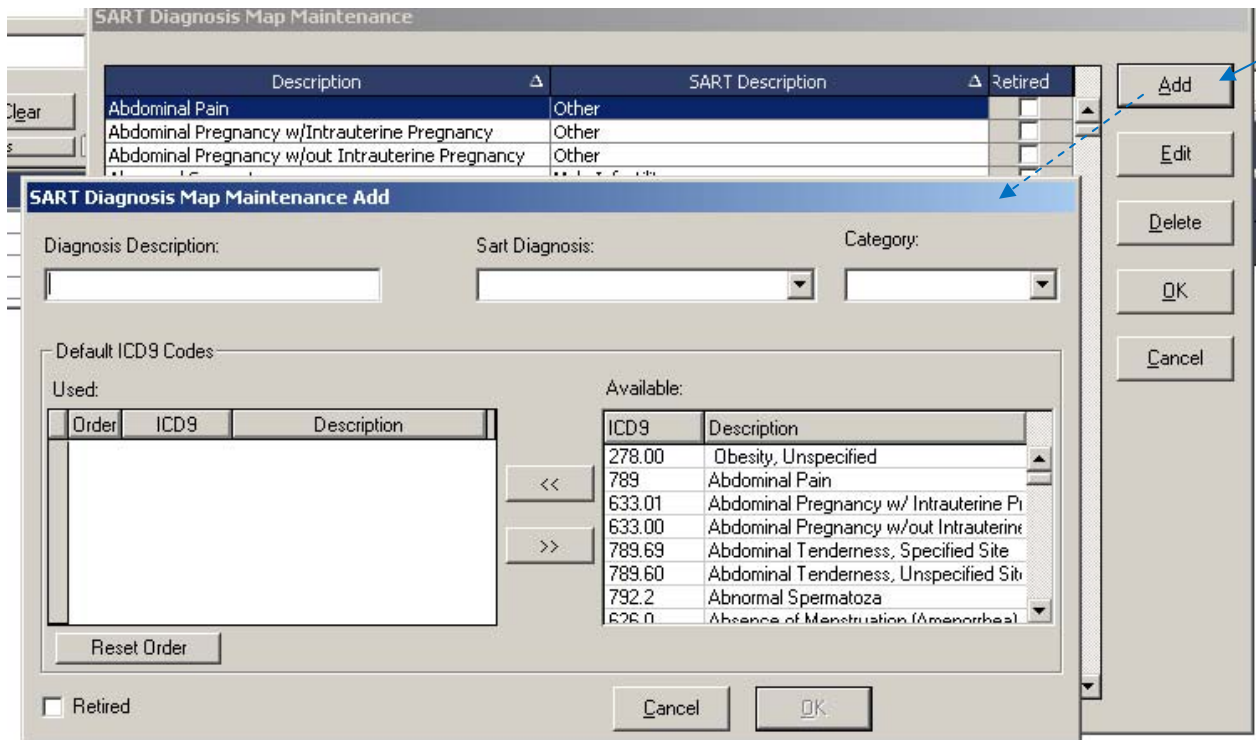
*Excerpt from Finance.Superbill.Admin document...*

### Cycle Diagnosis

The cycle diagnosis list is maintained under the Maintenance menu, Admin SART, SART Diagnosis Map. Here you create the cycle diagnoses you want available and map each one to a valid ICD code. By mapping each diagnosis to a code, the system is able to insert the corresponding ICDs into a superbill.

To Create/Map Cycle Diagnoses:

- 1 – in the main toolbar, go to Maintenance, Admin SART, SART Diagnosis Map. The SART Diagnosis Map Maintenance window will appear
- 2 – click Add (click Edit to alter an existing diagnosis). The SART Diagnosis Map Maintenance Add window will appear.



3 – enter the Diagnosis Description

4 – select the SART Diagnosis from the dropdown list. The SART Diagnosis options are maintained under the Maintenance menu, Admin SART, SART Diagnosis – from here you can add/edit/delete options.

5 – select the diagnosis Category. When searching for a diagnosis from a cycle, users will be able to filter their search lists by this category. The category options are maintained via the lkupDiagnosisCategories table in the Lookup Table Manager

6 – in the Default ICD 9 Codes section of the window, the available ICD codes are listed on the right and the used/applied ICD codes will be listed on the left. The ICD codes available are the same as described earlier in this document (Maintenance, Admin Finance, ICD Codes). Select a code from the Available section and click the << button to move it to the Used section. You can assign more than one ICD code to a single cycle diagnosis.

If more than one ICD is applied to a single diagnosis you can adjust the order of appearance by clicking in the Order cell and selecting an order number from the dropdown list. Clicking the Reset Order button will return the ICD order to its original state.

Used:		
Order	ICD9	Description
1	633.00	Abdominal Pregnancy w/out In
1	789.69	Abdominal Tenderness, Specifi
2		

7 – click OK

To Delete a Cycle Diagnosis:

1 – in the main toolbar, go to Maintenance, Admin SART, SART Diagnosis Map. The SART Diagnosis Map Maintenance window will appear

2 – click Delete

3 – click Yes to the ‘Confirm Removal’ prompt that appears

**Note:** You cannot delete cycle diagnoses that are already being used in the system. To remove such an item from any available lists you can check the Retired checkbox. This will make it unavailable for future use but will not affect any previous records. To access the Retired option, select the desired diagnosis in the SART Diagnosis Map Maintenance window and click Edit. Check off the Retired checkbox at the bottom of the Edit window.